



Calvary
lutheran church

invite • inspire • equip • engage

The Caller

Volume XXVI, Issue III
March 2019

Solitude to Community

¹² Now during those days he went out to the mountain to pray; and he spent the night in prayer to God. ¹³ And when day came, he called his disciples and chose twelve of them... ¹⁷ He came down with them and stood on a level place, with a great crowd of his disciples and a great multitude of people from all Judea, Jerusalem, and the coast of Tyre and Sidon. ¹⁸ They had come to hear him and to be healed of their diseases; and those who were troubled with unclean spirits were cured. ¹⁹ And all in the crowd were trying to touch him, for power came out from him and healed all of them. ~Luke 6:12-13a, 17-19 (NRSV)

Lent speaks deeply into my life each cycle of the church calendar. It is a season of reflection, repentance, and remaining in Christ. We are drawn into Lent on Ash Wednesday with the reminder that from dust we were formed and to dust we will return. Our mortality hangs heavy in the air as ash is imposed on our foreheads. However, we return to God's mercy and grace as the cross of ash is made on our brow; we are reminded that in our baptism we are sealed with the Holy Spirit and marked with the cross of Christ forever. We, then, enter Lent "longing for the baptis-

mal waters of Easter, our spiritual rebirth."

With this deep longing for renewal, allow me to introduce you to a powerful piece of writing by Catholic priest and theologian, Henri Nouwen. Titled "Moving from Solitude to Community to Ministry," Nouwen's article argues that these three disciplines – Solitude, Community, and Ministry – are essential in the life of a Christian to remain faithful.



Luke 6:12-19 gives us a framework for Nouwen's proposal. He writes, "This is a beautiful story that moves from night to morning to afternoon. Jesus spent the night in solitude with God. In the morning, he gathered His disciples around

him and formed community. In the afternoon, with his apostles, he went out and preached the Word and healed the sick. Notice the order – from solitude to community to ministry. The night is for solitude; the morning for community; the afternoon for ministry." In this season of Lent, I invite you to join our community in this rhythm, moving from solitude to community to ministry. **Solitude** – "Solitude is being with God and God alone. Is there any space for that in your life?"

On the mountain top, Jesus prays to God. In solitude, we find a place in which we can listen to God's voice calling us beloved. This is our beginning. This is who I am. This is who you are. God's beloved. Nouwen writes, "Jesus listened to [God's] voice all the time, and he was able to walk right through life. People were applauding him, laughing at him; praising him and rejecting him; calling "Hosanna!" and calling "Crucify!" But in the midst of that, Jesus knew one thing – *I am the beloved: I am God's favorite*

Continued from Intern Pastor Ben...

one. He clung to that voice." Solitude gives us space to hear, name, and claim God's voice in our lives. God's voice calling us beloved. When this voice resonates within our innermost-self, our "freedom is anchored in claiming [our] belovedness." This is where ministry begins. **Community** – "It's remarkable that solitude always calls us to community. In solitude you realize you're part of a human family..."

As we have all experienced, living in community can be challenging. When Jesus calls his disciples, the last name called was "Judas Iscariot, who became a traitor" (Luke 6:16b). This is the very reason solitude must come before community. Nouwen writes, "If we do not know we are the beloved sons and daughters of God, we're going to expect someone in the community to make us feel that way. They cannot. We'll expect someone to give us that perfect unconditional love. But community is not loneliness grabbing onto loneliness: 'I'm so lonely, and you're so lonely.' It's solitude grabbing onto solitude: 'I am the beloved; you are the beloved; together we can build a home.'" In community, having been grounded in our own belovedness, we are able to forgive one another for not being god to us and celebrate the gifts others; which is to accept each other's humanity.

Ministry – "If you know you are the beloved, and if you keep forgiving those with whom you form community and celebrate their gifts, you cannot do other than minister."

Nouwen writes, "Jesus cured people not by doing all sorts of complicated things. A power went out from him, and everyone was cured." Jesus simply lived ministry. It was not complicated, but it was most

certainly powerful. We are called to be a part of Jesus' healing ministry. "Healing ministry can be expressed in two words: *gratitude* and *compassion*." Our call to ministry is to help people let go of resentment, to discover that in the midst of pain there is Christ, crying with us, holding us, and carrying us to great joy. We are called to go to the places of suffering to live with those who suffer. Nouwen writes, "We are sent to wherever there is poverty, loneliness, and/or suffering to have the courage to be with people. Trust that by throwing yourself into that place of pain you will find the joy of Jesus. All ministries in history are built on that vision. A new world grows out of compassion."

Calvary Lutheran Church

So, in this season of Lent, this is the invitation: that we practice, together, the movement from solitude to community to ministry. We will be adapting our worship to follow this movement in the season of Lent. We will start our time of worship with a declaration of our belovedness, a reminder of God's voice naming and claiming us. Having been grounded in our belovedness, we will then share in a time of confession and forgiveness. Our confession that we cannot be god to one another and the forgiveness that says, "I know you love me, but you don't have to love me unconditionally, because no human being can do that." This is the movement from *solitude* into *community* that brings us a great desire for the peace of God to dwell among us in each other's lives. Therefore, we will continue our time of worship with the passing of the peace. Next, we hear the great stories of scripture and the promises of God's Word. Here

we get a glimpse of the greater community God is forming in the world. Here we realize the call to share life together. We then turn in prayer for one another, for the world, and all those in need. As we look forward to the Lord's feast, we first celebrate the gifts God has given us with a musical offering. As we pass our offering plate, we get a fuller vision of the gifts of our beloved community. We then gather at the table of grace and mercy, where God makes no restrictions. At this table we taste and see that God is good and has called us beloved. Together, we share a taste of the everlasting joy to come. Then, leaving the table, having been grounded in our belovedness, we set our eyes on Jesus leading us back into the world, to love the world, to trust in ministry together; moving from *community* to *ministry*.

Often, when I think about doing ministry, I think, "I can do it." And when I can't do it, I think, "I'll find some help!" And when we can't do it, I pray. This is the opposite of what Jesus does in Luke 6. It can be challenging moving from solitude to community to ministry. However, our congregation has already been practicing this rhythm. When we decided to slow down and enter into prayer and discernment, we decided to follow Jesus. We have been moving from solitude to community to ministry ever since. Now, we will practice this same rhythm in our ritual, in our worship.

Thanks be to God for naming our belovedness, calling us together, and sending us out to love the world. Amen.



Intern Pastor Ben Williams

Lent Happenings

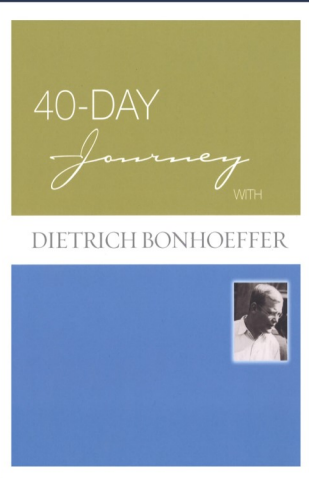
BUY YOUR DEVOTIONAL NOW

Get your copy
of our
Lenten Devotional
for the study
beginning
March 6th.

\$14.25 each

Look for copies on sale
in the Narthex between
Worship Services

or in the
Church Office
from Monday-Thursday,
9:00 a.m.— 3:00 p.m.



"The Church is the Church only when it exists for others"
-Dietrich Bonhoeffer

LENT

2019

Get your bookmark at Calvary &
track your 40-day journey!

HEART OF FLESH EVENING PRAYER & MEDITATIONS

life together

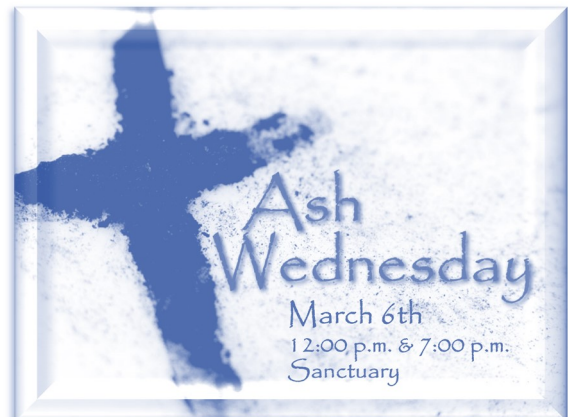
LENT

2019

Wednesday Evenings
7:00 p.m.

March 13th, 20th, 27th
& April 3rd, 10th

GREAT ROOM



UPCOMING HOLY WEEK DATES

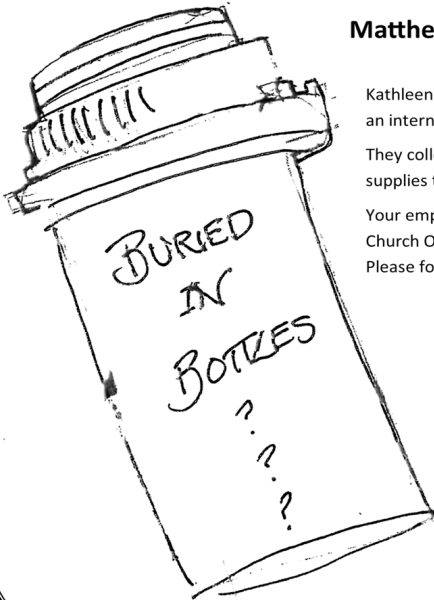
April 18th—Maundy Thursday
12:00 p.m. & 7:00 p.m.

April 19th—Good Friday
12:00 p.m. & 7:00 p.m.

April 20th—Easter Vigil
7:00 p.m.

April 21st—Easter Sunday
9:00 a.m. & 11:15 a.m.

Upcoming Happenings



Matthew 25 Ministries — Prescription Bottle Recycling

Kathleen Parks is collecting used prescription bottles for *Matthew 25 Ministries*, an international humanitarian aid and disaster relief organization.

They collect empty plastic pill bottles for inclusion in shipments of medical supplies to developing countries.

Your empty, clean, and gently used prescription bottles can be left in the Church Office or the collection box in the Narthex.

Please follow these directions....

- Bottles must have an all plastic lid.
- Remove labels, leaving no glue or residue.
- Wash bottles in very hot water and dish soap.
- Rinse and dry thoroughly.
- Replace lids on clean, dried bottles.

The Calvary Office will ship the bottles as boxes fill up.

Contact Kathleen Parks with questions.

The Red Wagon rolls

SUNDAY, March 10th

TRiO STUDENT SUPPORT SERVICES

Collecting new of gently used items...

School Supplies

Regular or mechanical pencils (0.7), pens, large erasers, hi-liters, college ruled spiral notebooks, 1" & 2" binders, college ruled filler paper, adult sized backpacks, page protectors, travel tissue, AAA batteries, used TI-83 or TI-84 calculators, 6" or 12" rulers, pencil pouches, tabbed inserts for binders, tri-fold project boards, white poster boards, Eraser board markers (dark colors, pen shaped).

Snacks

Granola bars, cheese or peanut butter crackers, cup of soups, ramen noodles, pasta and oatmeal cups (using a microwavable or hot water to make), disposable spoons and forks.

Free Box

Gloves, hats, scarves, umbrellas, small-sized toiletries, water bottles, and covered hot drink cups.

Thank you again for your generosity!

The Red Wagon will roll during both services!

TRiO Student Support Services at Green River Community College

increases opportunities for academic success for first generation, low income, and/or students with disabilities. It actively provides comprehensive academic support services and encouragement to eligible students.

Red Wagon
Serving Our Community

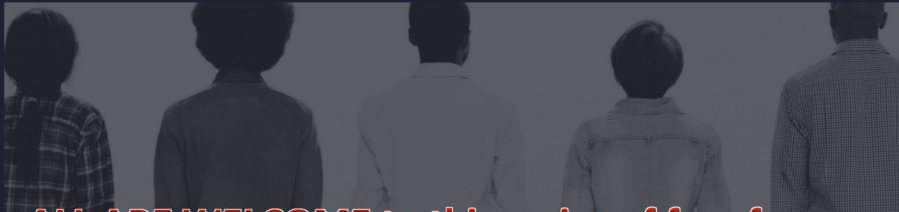


Upcoming Happenings

JOIN US IN A CELEBRATION OF DIVERSITY AND AN OPPORTUNITY TO LISTEN.


SILENT NO MORE:

Sex, Gender & Identity in the Church



ALL ARE WELCOME to this series of free forums...

ATTEND THE FINAL LECTURE ON MARCH 3RD 3:00 P.M.

 **HOSTED BY**
Calvary
lutheran church

2415 S. 320TH St. Federal Way, WA 98003
www.calvaryfw.org 253-839-0344

Youth
Lit
LIVING
in the
CROSS

Calvary & Christ Lutheran

upcoming events

Sunday, March 3rd
3:00—5:00 p.m.

@ Calvary
attend the "Silent No
More" Lecture in the
Social Hall then cocoa
& conversation in the
Fireside Room.

Sunday, March 17th
4:00—7:00 p.m.

Meet @ Calvary
for the
PLU Worship &
Campus Dinner

**Pub
Theology**

Friday, March 22nd
6:30 p.m.

billy mchale's
1320 South 324th
Federal Way, WA

Youth Opportunity



Now accepting applications for the
ALY class of 2020!

Do you know a student who would benefit from the
program? Encourage them to apply!



We are excited to help another class of student leaders discover and develop their personal strengths, network with local peers and regional leaders, and work together to drive impactful change in our community.

If you know a student in the Federal Way area who will be Sophomore or Junior during the 2019-2020 school year who could benefit from 9 months of hands-on leadership training and development please encourage them to apply at

<https://ikeandtash.typeform.com/to/DeuYZg>

Know a student who wants more information about the program?

<http://advancingleadership.org/faq-youth-program>

Ministries



LWR Quilting Ministry

Monday, March 11th
10:00 A.M.
Learning Center #1
Contact: Corky Black



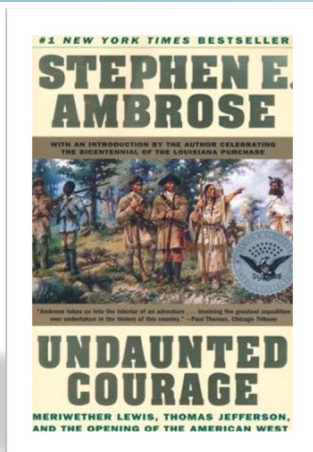
Naomi Circle

Monday, March 18th
2:00 P.M.
Carolyn Davis' Home
Contact:
Madeline Tam-Yamada



Thursday, March 21st
Peking Wok
Contact: Vicki Smith

Book Studies



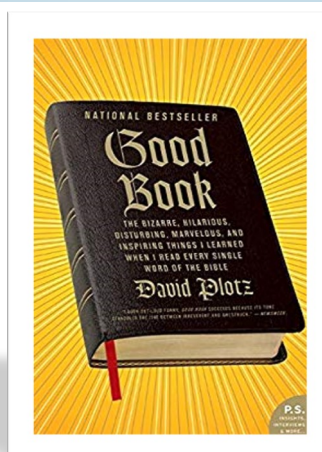
Men's Book Club

March's Meeting:
Thursday, Mar. 14th
1:30 P.M. — LC #1

Book: *Undaunted Courage*
by Stephen E. Ambrose

April's Book: *Fly Boys*
by James Bradley

Contacts: Larry Bengtson,
Bill Johnson



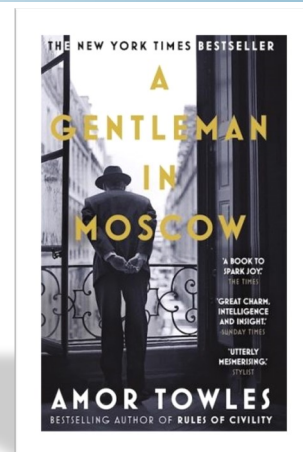
Fierce Women's Faith Study

Open to all women of Calvary.

March's Meeting:
Monday, Mar. 18th
6:30 P.M. — Fireside Room
Book: *Good Book* by David Plotz

We will continue with the bizarre,
hilarious, disturbing, marvelous,
and inspiring things the author
learned when reading every single
word of the Bible.

Contact: Pastor Lori



Calvary Book Club

*Open to men and women
interested in exploring
literature together.*

March's Meeting: Thursday,
Mar. 28th at 12:30 P.M.
Calvary Library

Book: *A Gentleman in Moscow*
by Amor Towles

April's Book:
TBD

Contact: Gail Pierson

Bible Studies

MEN'S BIBLE STUDY

Thursdays at 8:00 A.M.

March 7th
Poverty Bay Café
1108 S. 322nd Pl, FW

March. 14th LC #2

March. 21st LC #2

March. 28th LC #2

Facilitator: Bill Johnson

Young Adult Ministry Bible Study

Thursdays at 6:30 P.M.
in the home of
Kyle Franklin

All members ages 19
to 40-something are
welcomed to join!

Tuesday Bible Study

Tuesdays at 10:00 A.M. in LC #2

March's Topic: 1st and 2nd Corinthians

Facilitators: Pastor Lori Cornell, Intern Pastor Ben Williams

Wednesday Bible Study

Wednesdays at 10:00 A.M. in the Calvary Library

A weekly conversation based on our 40-day Journey
with Dietrich Bonhoeffer

Facilitators: Pastor Lori Cornell, Intern Pastor Ben Williams

February Memories



(above) **The Annual Meeting was on Sunday, February 3rd.**

Bill Johnson spoke about the bathroom and kitchen remodels, Kyle Franklin presided as the outgoing Council President, and Intern Pastor Ben Williams spoke about his Intern experience. Suzanne Higgins was thanked for her many years of service as Treasurer, Finance Team member, and Reach Out Coordinator. *(Photos courtesy of Glenn Sawyer)*



(left) **Much of Loren Peterson's word-working** was given to our members and the community. *(Photo courtesy of Vern Warmbo)*



(left) **Barb Frost** celebrated her 91st birthday with a balloon creation. *(Photo courtesy of Vern Warmbo)*



(above) **The "Silent No More: Sex, Gender & Identity in the Church"** series of lectures were open to the public and a big success. Pastor Danny Cortez *(above, left)* spoke about his Southern Baptist congregation's journey toward affirming the LGBTIQ community. Dr. Samuel Torvend *(above, right)* spoke about the persecution of homosexuals during the holocaust. *(Photos courtesy of Duane Sawyer and Glenn Sawyer)*

ELCA presiding bishop pastoral letter on UMC decision

2/27/2019 6:00:00 PM

<https://www.elca.org/News-and-Events/7960>

Dear Church,

This morning at worship in the Churchwide Office we sang;

God, when human bonds are broken, and we lack the love or skill To restore the hope of healing, give us grace and make us still...Give us faith to be more faithful, give us hope to be more true, Give us love to go on learning: God, encourage and renew. (ELW 603)

These words speak to many aspects of our current world. Today they resonate especially with our continuing prayers for our full communion partner, The United Methodist Church (UMC), and, as they call themselves, for all "the people called Methodists."

Yesterday the 2019 General Conference, the UMC's highest legislative body, voted to affirm the church's current prohibitions of "ordaining LGBTQ clergy and officiating at or hosting same-sex marriage." (You can read about this decision at <https://www.umnews.org>.) This special General Conference had been called for this issue only; in the end, delegates turned away from a plan recommended by their Council of Bishops, which allowed for diversity in local practice, to embrace instead this "Traditional Plan."

Many of you today are asking the good Lutheran question,

"What does this mean?" The implications of the decisions of the General Conference are not yet fully apparent: the Judicial Council must review controversial provisions later this year, and in any case the rippling consequences for ecclesial life will take much longer to work themselves out. Yet it seems clear that the conclusion of this process has not brought the greater unity for which so many longed.

What we can say with certainty is that as the UMC takes its next steps, we in the ELCA will continue to walk with our full communion partner. We treasure the joyful memories of the 2009 Churchwide Assembly, where, in a near unanimous vote, we entered into this relationship. We are grateful also for the common witness, deepened friendships and shared ministries that have been the fruits of this decision. This relationship, and our commitment, have become woven into who we are as this church. Our life together as churches is a shared life together in Christ.

We remember also that the same 2009 Assembly decided to open the way for those in same-gender relationships to serve as pastors. This week, as we watched the impassioned debates on the plenary floor in St. Louis, we recognized that these costly struggles are familiar

from our own recent history, and acknowledge that some amongst us have experienced re-traumatization. In our present experience also, we have not fully grown into the commitments we have made. Yet, though a controversial decision at the time, our 2009 action has brought strength and blessings for our life and mission beyond what we could have imagined a decade ago. This church treasures the faithful ministries of those rostered leaders who help us witness to God's love and invitation for all people. Their ministries are integral to who we are as this church.

I ask this church, then, to continue by the side of the UMC, exchanging gifts and sharing burdens. In particular, we pray for them in their continued efforts faithfully to be church in the contexts we share. As we pray for them, we pray also for this church: may we be faithful to the calling to which we have been called, willing to confess our shortcomings and to trust in the healing, challenge and surprise of the Spirit of God, who calls us always forward.

In Christ,

The Rev. Elizabeth A. Eaton

Presiding Bishop

Members and Milestones

Prayers for Members with Ongoing Health Issues

Ardy Jobse	John Corliss
Carrie Ferguson	John Moller
Doris Rime	Judy Nalley
Grace Schwartz	Marlise Ross
Janet Freeman-Daily	Nellie Gordon
Jeanne Hotchkiss	

MILESTONES

Birthdays

- 1 Corky Black
- Dottie Corliss
- 3 Logan Fant
- 4 Beth Engberg
- Angella Patera
- 5 Doug Dale
- 8 Bob McClane
- 16 Ken Corliss
- 17 John Corliss
- 18 Vivian Anderson
- 23 Karin Johnson
- 24 Margaret Peterson
- 29 Nicole Willing
- 30 Cindy Wagner
- 31 Judy Nalley



Join "Calvary Lutheran Church, Federal Way, WA" for up to date events and photos!



Do You Love Planning Meals & Serving Our Community?

If yes, there is a perfect opportunity to give back and bless others who visit CLC each week.

We need a new Meal Planner for Thursday Community Suppers.

The current Meal Planner, Reinalyn Hash-Sitzler, will be vacating her position as of April 1st, but would like to train someone soon. You can reach her at: reinalyn.hash@gmail.com or by phone at 206-818-5017.

Baptismal Anniversaries

John Corliss
Marj Hause
Olivia Liening
Elizabeth Logan
Sue Snyder

March 2019 Calendar

Sunday	Monday	Tuesday	Wednesday	Thursday	Friday	Saturday
<p>24 9:00 AM Sanctuary Worship/Communion 10:15 AM Adult FORUM/Social Hall- Church Year- Lent 10:15 AM Faith 5 - Confirmation 10:15 AM Learning in Motion/LC #2 11:15 AM Deeper Life/Communion/Great Room 11:15 AM Steel Lake Worship/Sanctuary 3:00 PM Silent No More Series/SH 4:00 PM (FW Chinese FS) Gr Rm, Nursery 7:00 PM LIT & Confirmation Serve Reach Out Dinner</p>	<p>25 9:00 AM Japanese Students (Library) 9:00 AM Staff Mtg/Work Room 6:30 PM Deeper Life Band Rehearsal/GreatRm</p>	<p>26 9:00 AM Japanese Students (Library) 10:00 AM Tuesday Bible Study/LC#2 3:00 PM Finance Trn/Calky Work Room 6:00 PM Japanese Students Last Day & Farewell - LC#162 8:00 PM (AA Group/Rm 102)</p>	<p>27 10:00 AM Wednesday Bible Study/Library 10:00 AM Confirmation Class/Library 12:30 PM Steel Lake Bell Choir Practice 7:30 PM Steel Lake Chancel Choir Practice</p>	<p>28 8:00 AM Men's Bible Study/LC #2 10:00 AM Coffee with the Intern (Poverty Bay) 12:30 PM Book Club/Library 3:00 PM Community Supper 6:00 PM (TOPS WA #642/LC#1, 6-8 PM) 6:00 PM Bell Choir Rehearsal/Loft 6:30 PM /AM Bible Study @ Kyle Franklin's 7:15 PM Calvary Choir Rehearsal/Sanctuary</p>	<p>1 9:00 AM Carpet Cleaning/SH, Nantrex, Office</p>	<p>2 8:30 AM Steel Lake Training/Social Hall 9:00 AM Grounds Work Party</p>
<p>3 9:00 AM Sanctuary Worship/Communion 10:15 AM Adult FORUM/Social Hall- Named in Baptism, Confirmation in Prayer 10:15 AM Faith 5 - Confirmation 10:15 AM Learning in Motion/LC #2 11:15 AM Deeper Life/Communion/Great Room 11:15 AM Steel Lake Worship/Sanctuary 12:15 PM SLPC Coffee Fellowship 3:00 PM Silent No More Series/SH 4:00 PM (FW Chinese FS) Gr Rm, Nursery 4:00 PM LIT Dinner & Conversation/Pr, Lori's Home</p>	<p>4 9:00 AM Staff Mtg/Work Room 6:30 PM Deeper Life Band Rehearsal/GreatRm 6:30 PM Internship Team Meeting/LC#1</p>	<p>5 10:00 AM Tuesday Bible Study/LC#2 3:00 PM SLPC 7:00 PM Reception/Sanct. Management Team Mtg/Rm 8:00 PM (AA Group/Rm 102)</p>	<p>6 ASH-WEDNESDAY 12:00 PM Ash Wednesday Service/Sanctuary 3:00 PM Steel Lake Ash Wed Service/Sanctuary 7:00 PM Ash Wednesday Service/Sanctuary</p>	<p>7 8:00 AM Men's Bible Study/Poverty Bay Cafe 10:00 AM Coffee with the Intern (Poverty Bay) 12:30 PM Book Club/Library 3:00 PM Community Supper 6:00 PM (TOPS WA #642/LC#1, 6-8 PM) 6:00 PM Bell Choir Rehearsal/Loft 6:30 PM YAM Bible Study @ Kyle Franklin's 7:15 PM Calvary Choir Rehearsal/Sanctuary</p>	<p>8 9:00 AM Carpet Cleaning/SH, Nantrex, Office</p>	<p>9 2:00 PM SLPC Memorial Service</p>
<p>10 RED WAGON 9:00 AM Sanctuary Worship/Communion 10:15 AM Adult FORUM/Social Hall 10:15 AM Faith 5 - Confirmation 10:15 AM Learning in Motion/LC #2 11:15 AM Deeper Life/Communion/Great Room 11:15 AM Steel Lake Worship/Sanctuary 4:00 PM (FW Chinese FS) Gr Rm, Nursery</p>	<p>11 9:00 AM Staff Mtg/Work Room 10:00 AM LVR Quilting Group/LC #1 6:30 PM CYFM Team Mtg/Library 6:30 PM Deeper Life Band Rehearsal/GreatRm</p>	<p>12 10:00 AM Tuesday Bible Study/LC#2 7:00 PM Church Council/LC #1 8:00 PM (AA Group/Rm 102)</p>	<p>13 10:00 AM Wednesday Bible Study/Library 10:00 AM Steel Lake Bell Choir Practice 7:00 PM Healing of the Nations/Evening Prayer/GR 7:30 PM Steel Lake Chancel Choir Practice</p>	<p>14 8:00 AM Men's Bible Study/LC #2 10:00 AM Coffee with the Intern (Poverty Bay) 1:30 PM Men's Book Club/LC#1 3:00 PM Community Supper 6:00 PM (TOPS WA #642/LC#1, 6-8 PM) 6:00 PM Bell Choir Rehearsal/Loft 6:30 PM YAM Bible Study @ Kyle Franklin's 7:15 PM Calvary Choir Rehearsal/Sanctuary</p>	<p>15</p>	<p>16</p>
<p>17 9:00 AM Sanctuary Worship/Communion 10:15 AM Adult FORUM/Social Hall 10:15 AM Faith 5 - Confirmation 10:15 AM Learning in Motion/LC #2 11:15 AM Deeper Life/Communion/Great Room 11:15 AM Steel Lake Worship/Sanctuary 4:00 PM (FW Chinese FS) Gr Rm, Nursery 4:00 PM LIT</p>	<p>18 9:00 AM Staff Mtg/Work Room 2:00 PM Naomi Circle 6:30 PM Deeper Life Band Rehearsal/GreatRm 6:30 PM Fierce Woman's Faith Study/Fireside</p>	<p>19 10:00 AM Tuesday Bible Study/LC#2 7:00 PM Building & Grounds Teams/LC #1 8:00 PM (AA Group/Rm 102)</p>	<p>20 10:00 AM Wednesday Bible Study/Library 10:00 AM Steel Lake Bell Choir Practice 7:00 PM Healing of the Nations/Evening Prayer/GR 7:30 PM Steel Lake Chancel Choir Practice</p>	<p>21 Lunch Bunch-Peking Wok 8:00 AM Men's Bible Study/LC #2 10:00 AM Coffee with the Intern (Poverty Bay) 12:30 PM Book Club/Library 3:00 PM Community Supper 6:00 PM (TOPS WA #642/LC#1, 6-8 PM) 6:00 PM Bell Choir Rehearsal/Loft 6:30 PM YAM Bible Study @ Kyle Franklin's 7:15 PM Calvary Choir Rehearsal/Sanctuary</p>	<p>22 6:30 PM Pub Theology/Billy McHales</p>	<p>23</p>
<p>24 9:00 AM Sanctuary Worship/Communion 10:15 AM Adult FORUM/Social Hall 10:15 AM Faith 5 - Confirmation 10:15 AM Learning in Motion/LC #2 11:15 AM Deeper Life/Communion/Great Room 11:15 AM Steel Lake Worship/Sanctuary 4:00 PM (FW Chinese FS) Gr Rm, Nursery 7:00 PM LIT/Confirmation Serve Reach Out</p>	<p>25 9:00 AM Staff Mtg/Work Room 6:30 PM Deeper Life Band Rehearsal/GreatRm</p>	<p>26 10:00 AM Tuesday Bible Study/LC#2 3:00 PM Finance Trn/LC #1 8:00 PM (AA Group/Rm 102)</p>	<p>27 10:00 AM Wednesday Bible Study/Library 10:00 AM Steel Lake Bell Choir Practice 7:00 PM Healing of the Nations/Evening Prayer/GR 7:30 PM Steel Lake Chancel Choir Practice</p>	<p>28 8:00 AM Men's Bible Study/LC #2 10:00 AM Coffee with the Intern (Poverty Bay) 12:30 PM Book Club/Library 3:00 PM Community Supper 6:00 PM (TOPS WA #642/LC#1, 6-8 PM) 6:00 PM Bell Choir Rehearsal/Loft 6:30 PM YAM Bible Study @ Kyle Franklin's 7:15 PM Calvary Choir Rehearsal/Sanctuary</p>	<p>29</p>	<p>30</p>
<p>31 9:00 AM Sanctuary Worship/Communion 10:15 AM Adult FORUM/Social Hall 10:15 AM Faith 5 - Confirmation 10:15 AM Learning in Motion/LC #2 11:15 AM Deeper Life/Communion/Great Room 11:15 AM Steel Lake Worship/Sanctuary 11:30 AM Baby Dedication/Social Hall 4:00 PM (FW Chinese FS) Gr Rm, Nursery</p>	<p>1 9:00 AM Staff Mtg/Work Room 6:30 PM Deeper Life Band Rehearsal/GreatRm 6:30 PM Internship Team Meeting/LC#1</p>	<p>2 10:00 AM Tuesday Bible Study/LC#2 7:00 PM Management Team/MtRm 8:00 PM (AA Group/Rm 102)</p>	<p>3 10:00 AM Wednesday Bible Study/Library 10:00 AM Steel Lake Bell Choir Practice 7:00 PM Healing of the Nations/Evening Prayer/GR 7:30 PM Steel Lake Chancel Choir Practice</p>	<p>4 8:00 AM Men's Bible Study/Poverty Bay Cafe 10:00 AM Coffee with the Intern (Poverty Bay) 12:30 PM Book Club/Library 3:00 PM Community Supper 6:00 PM (TOPS WA #642/LC#1, 6-8 PM) 6:00 PM Bell Choir Rehearsal/Loft 6:30 PM YAM Bible Study @ Kyle Franklin's 7:15 PM Calvary Choir Rehearsal/Sanctuary</p>	<p>5 9:00 AM Grounds Work Party</p>	<p>6</p>

Leading in Worship Schedule

March 2019	3	6 ^{Ash Wed}	6 ^{Ash Wed}	10	17	24	31
Sanctuary	9:00	noon	7:00 PM	9:00	9:00	9:00	9:00
Altar Guild	Marsha Nicolson	Gayle Miller	Gayle Miller	Denise Achman	Holly Fisher	Sue Thoreson	Dixie Baeth
	Cindy Wagner	Lynn Fisher	Lynn Fisher	Dixie Baeth	Lynn Fisher	Dixie Baeth	Cindy Wagner
Hospitality	Vicki Smith	Holly Fisher	Holly Fisher	Diana Paris	Sue Thoreson		
	Jackie Russo	none	none	Mary Sawyer	NEEDED	Holly Fisher	Dixie Baeth
Building Super	Bill Johnson	Bill Johnson	Phil Sell	Randy Baeth	Bonnie Nagode	Lynn Fisher	Randy Baeth
Greeter	Corky Black	Marsha Case	Nellie Gordon	Bill Huff	Dixie Baeth	Dottie Corliss	Ellen Gaebe
	Diana Paris	Vonne Fowler	Kathleen Parks	Betty Huff	Randy Baeth	Barb Frost	Vonne Fowler
Usher	Dan Achman	Bill Johnson	Phil Sell	Randy Baeth	Phil Sell	Vern Warmbo	Bill Huff
	Denise Achman	Mary Sawyer	Issac Winslow	Ben Johnson	Kelly Thoreson	Jean Warmbo	Betty Huff
Acolyte	Emily Kropp	X	Suzannah Winslow	Morgan Fant	Emily Kropp	Suzannah Winslow	Morgan Fant
Assisting Minister	Karin Johnson	Renate Cooper	Pat Roragen	Marj Hause	Bobbi McClain	Kyle Franklin	Madeline Tam
Reader	Vern Warmbo	Roger Lundeen	Craig Hoppler	Ken Corliss	Larry Reintzma	Kathleen Parks	Bobbi McClain
	~ Intinction ~	~ Intinction ~	~ Intinction ~		~ Intinction ~		
Communion	Kyle Franklin	Gail Pierson	Dottie Corliss	Craig Hoppler	Dan Achman	Diana Paris	Renate Cooper
Assistant	Bobbi McClain	X	Ken Corliss	Madeline Tam	Karin Johnson	Pat Roragen	Becky Riddle
<i>serve juice or tray</i>	<i>Emily Kropp</i>	X	<i>Suzannah Winslow</i>	<i>Morgan Fant</i>	<i>Emily Kropp</i>	<i>Suzannah Winslow</i>	<i>Morgan Fant</i>
<i>serve juice or tray</i>	X	X	X	X	<i>Vicki Smith</i>	<i>Randy Baeth</i>	<i>Kathleen Parks</i>
Pew Communion	Marj Hause	X	Madeline Tam	Bobbi McClain	Renate Cooper	Bill Johnson	Craig Hoppler
Sound Board	Glenn Sawyer	Glenn Sawyer	Al Parke	Glenn Sawyer	Al Parke	Craig Hoppler	Glenn Sawyer
Deeper Life @ 11:15							
Greeter	Paula Fowler			Betty Pingeon	Mike Ragan	Cathy Sannerud	Mary Sawyer
Communion	Waverly Hagen			Paula Fowler	Cathy Sannerud	Mike Ragan	Paula Fowler
Assistant	Cathy Sannerud			Waverly Hagen	Mary Sawyer	James Nichols	Mike Ragan
Please find your own replacement, then notify the office. For future scheduling clschedulefw@gmail.com updated 2.26.19							

Church Financials

A Report from Your Finance Team

2019	January	Year to Date	Total Planned	YTD % of Plan*
Income	\$19,099	\$19,099	\$464,158	4.1%
Expenses	\$33,251	\$33,251	\$464,158	7.2%
Net Ordinary Income	(\$14,152)	(\$14,152)		

* January is 8.3% of the year

2018 Data for Comparison

2018 Actual Results

2018	January	Year to Date	2018 Total (Actual)	YTD % of Actual Total
Income	\$22,842	\$22,842	\$394,016	5.8%
Expenses	\$31,305	\$31,305	\$395,565	7.9%
Net Ordinary Income	(\$8,463)	(\$8,463)		

What's noteworthy?

- January's expenses exceeded income by \$14,152 resulting in a large operating deficit to begin the year. Income was (by far) the lowest for a single month in the last 6 years, while expenses were about average.
- Please continue your support to Calvary and its missions in 2019!



Calvary Lutheran Church, 2415 S. 320th Street, Federal Way, WA 98003
Phone: (253) 839 - 0344, Fax: (253) 839 - 0345, www.calvaryfw.org